




Trigger rapid de curățare
Quick-release trigger / Dispositif de démontage rapide / Mecanismo de acoplamiento y desacoplamiento rápidos / Leva a rilascio rapido / Snelkoppelingspal / Schnellverschluss


 Următoarele instrucțiuni se referă la modalitatea de curățare și întreținere a filtrului Magna Clean Professional 2, utilizând trigger-ul rapid de curățare.

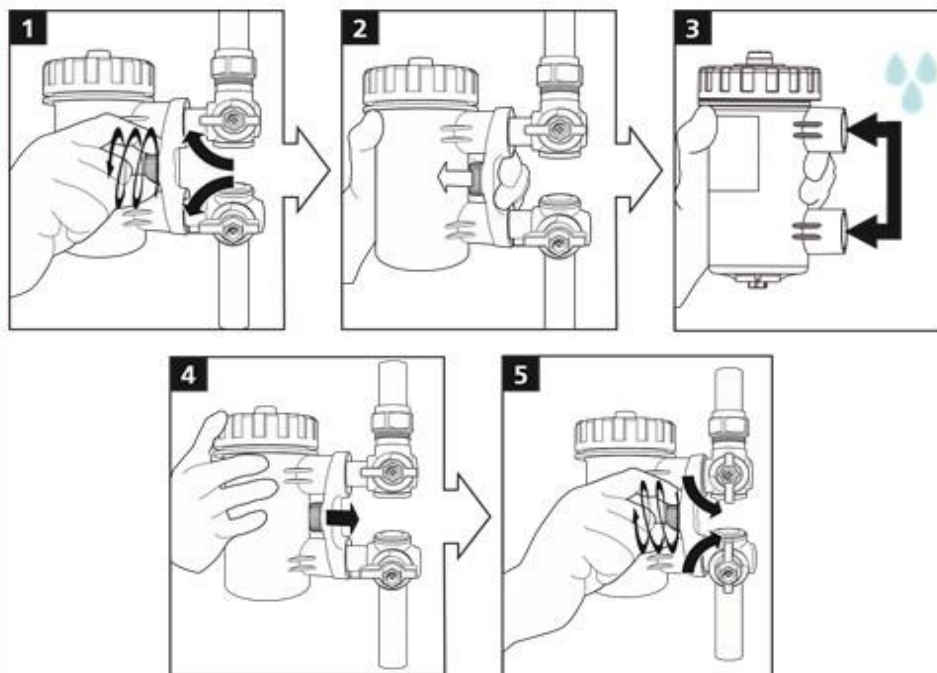
 The following instructions are for servicing of *MagnaClean Professional2* using the quick release trigger.

 Les instructions suivantes permettent de réaliser l'entretien du *MagnaClean Professional2* à l'aide du dispositif de démontage rapide.


 Le seguenti istruzioni riguardano la manutenzione di *MagnaClean Professional2* utilizzando la leva a rilascio rapido.


 De volgende instructies betreffen het onderhoud van *MagnaClean Professional2* met behulp van de snelkoppelingspal.


 Die folgende Anleitung gilt für die Wartung von *MagnaClean Professional2* mithilfe des Schnellverschlusses.





Multiple opțiuni de instalare
Multiple installation options / Options d'installation multiples / Múltiples opciones de instalación / Varie opzioni di installazione / Meerdere installatie-opties / Vielfache Einbauoptionen


 Design-ul 360° al filtrului Magna Clean Professional 2, îi conferă acestuia opțiuni multiple de instalare.

 The *MagnaClean Professional2*'s in-line design and 360° valves provide multiple installation options.

 Grâce à sa conception en ligne et à ses vannes 360°, le *MagnaClean Professional2* offre plusieurs options d'installation.

 Grazie al design in linea e alle valvole a 360°, *MagnaClean Professional2* consente di scegliere tra varie opzioni di installazione.

 Doordat de *MagnaClean Professional2*'s in de leiding wordt gemonteerd en 360° kleppen heeft, biedt hij meerdere installatie-opties.

 Durch die speziell entwickelten 360°-Ventile ist der einfache Einbau von *MagnaClean Professional2* in verschiedenen Positionen gewährleistet.



ADEY
PROFESSIONAL HEATING SOLUTIONS


Email: info@adey.com www.adey.com


MagnaClean²





ADEY
PROFESSIONAL HEATING SOLUTIONS

Installation / Installation / Instalación / Installazione / Installatie / Installieren

 Pentru a obține cel mai bun nivel de protecție pentru centrala termică, se recomandă ca Magna Clean Professional 2 să fie montat pe returul sistemului, după ultimul radiator, înaintea centralei.

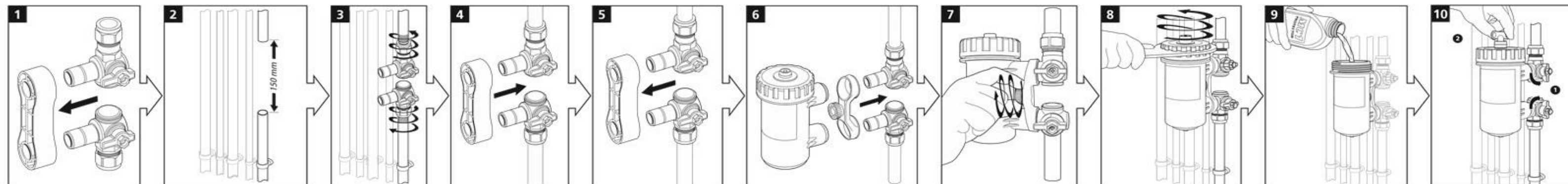
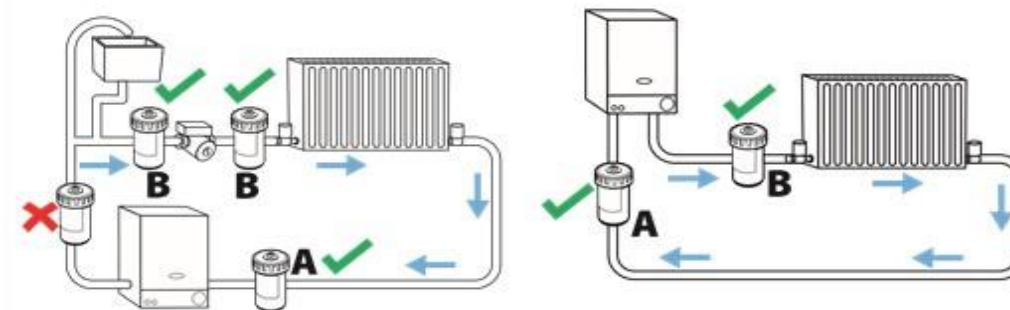
 To achieve the best level of protection for the boiler, it is recommended that MagnaClean Professional2 is fitted on the return of the system after the last radiator before the boiler.

 Pour garantir une protection optimale de la chaudière, nous conseillons de placer le MagnaClean Professional2 sur le tuyau de retour, entre la chaudière et le dernier radiateur.

 Per proteggere al meglio la caldaia, raccomandiamo di installare MagnaClean Professional2 sulla linea di ritorno dell'impianto, dopo l'ultimo radiatore prima della caldaia.

 Voor de beste bescherming van de boiler wordt aangeraden om MagnaClean Professional2 te monteren op de retourleiding van het systeem, na de laatste radiator voor de boiler.

 Zum optimalen Schutz des Heizkessels wird empfohlen, MagnaClean Professional2 im Rücklauf der Anlage nach dem letzten Heizkörper und vor dem Kessel einzubauen.



Servicing / Entretien / Mantenimiento / Manutenzione / Onderhoud / Wartung

